

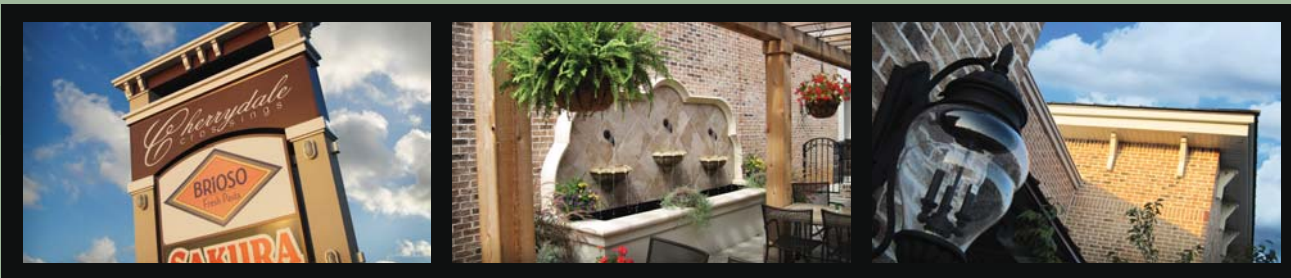
CHERRYDALE CROSSINGS

OFFICE / RETAIL CENTER • 26,000 SQ. FT.



2537 NORTH PLEASANTBURG DRIVE, GREENVILLE, SC 29609

Cherrydale Crossings is designed with two distinctive brick buildings that feature approximately 26,000 square feet of retail space. Architectural details include special insets, carriage lights and a stacked stone foundation. This is an ideal location for a wide variety of retail, restaurants and professional services.



Contact: Kim Wilson • Phone: 864.901.4939

1325 Miller Rd. Suite D • Greenville, SC 29607 • P: 864.675.0075 • F: 864.675.6515

No warranty or representation, express or implied, is made as to the accuracy of the information contained herein, and same is submitted subject to errors, omissions, change of price, rental, or other conditions, and withdrawal without notice.

CHERRYDALE CROSSINGS

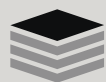
OFFICE / RETAIL CENTER • 26,000 SQ. FT.

RESIDENTIAL



NORTH PLEASANTBURG DRIVE

◀ TO I-385 TO CHERRYDALE ▶

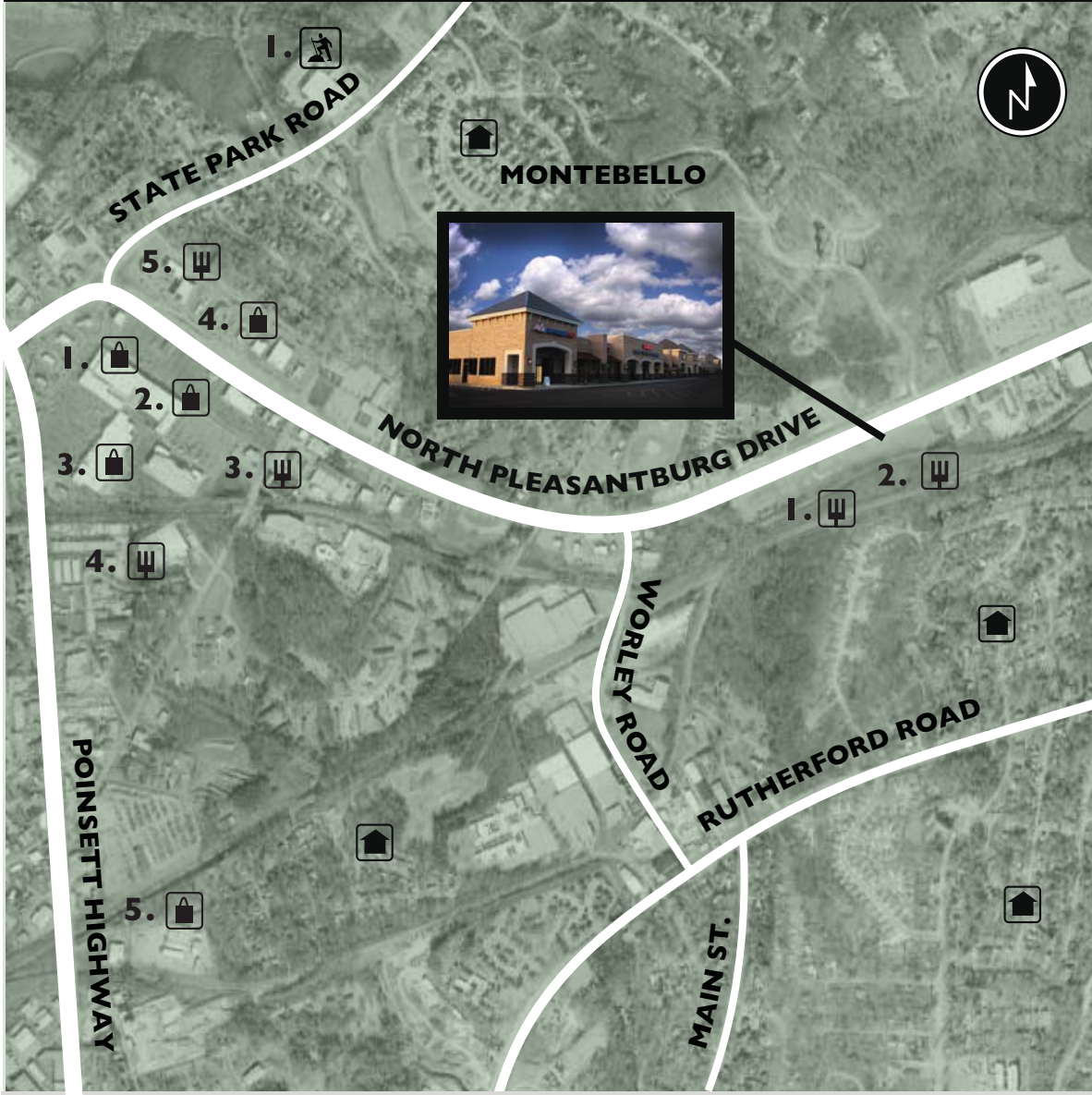


BoyettProperties

Contact: Kim Wilson • Phone: 864.901.4939

1325 Miller Rd. Suite D • Greenville, SC 29607 • P: 864.675.0075 • F: 864.675.6515

C H E R R Y D A L E C R O S S I N G S



DINING

1. COMPADRE'S MEX MEX GRILLE 2. BRIOSSO'S FRESH PASTA
3. ATLANTA BREAD COMPANY 4. KENTUCKY FRIED CHICKEN, 5. THE OLIVE GARDEN.



SHOPPING

1. OLD NAVY 2. T.J. MAXX
3. BED, BATH & BEYOND 4. PETCO.
5. O'REILLY'S AUTO PARTS



RESIDENTIAL



RECREATION

1. PARIS MOUNTAIN STATE PARK

1325 Miller Rd. Suite D • Greenville, SC 29607

P: 864.675.0075 • F: 864.675.6515



Contact: Kim Wilson • Phone: 864.901.4939